

Next Generation of Forest Agency Leaders Seminar

Oaxaca de Juárez, Oax., July 2015

Oaxaca, a forest state, Key facts, resources and community governance schemes



Key Facts



Oaxaca is located at the southeast of Mexico

- Total area: 9.3 million hectares
 - Forest coverage: 6.2 million hectares
 - Forest: 3.31 million hectares
 - Forests: 2.65 million hectares
 - Type: 90% is social property
 - Municipalities: 570
 - Total population: 3.3 million
-
- 12,000 species of flora and fauna, more than 800 species are endemic; (Biodiversity of Oaxaca, 2004).
-
- These ecosystems: rainforests, tropical forests, temperate forests, dry forests, thorn forests and deserts.

Key Facts

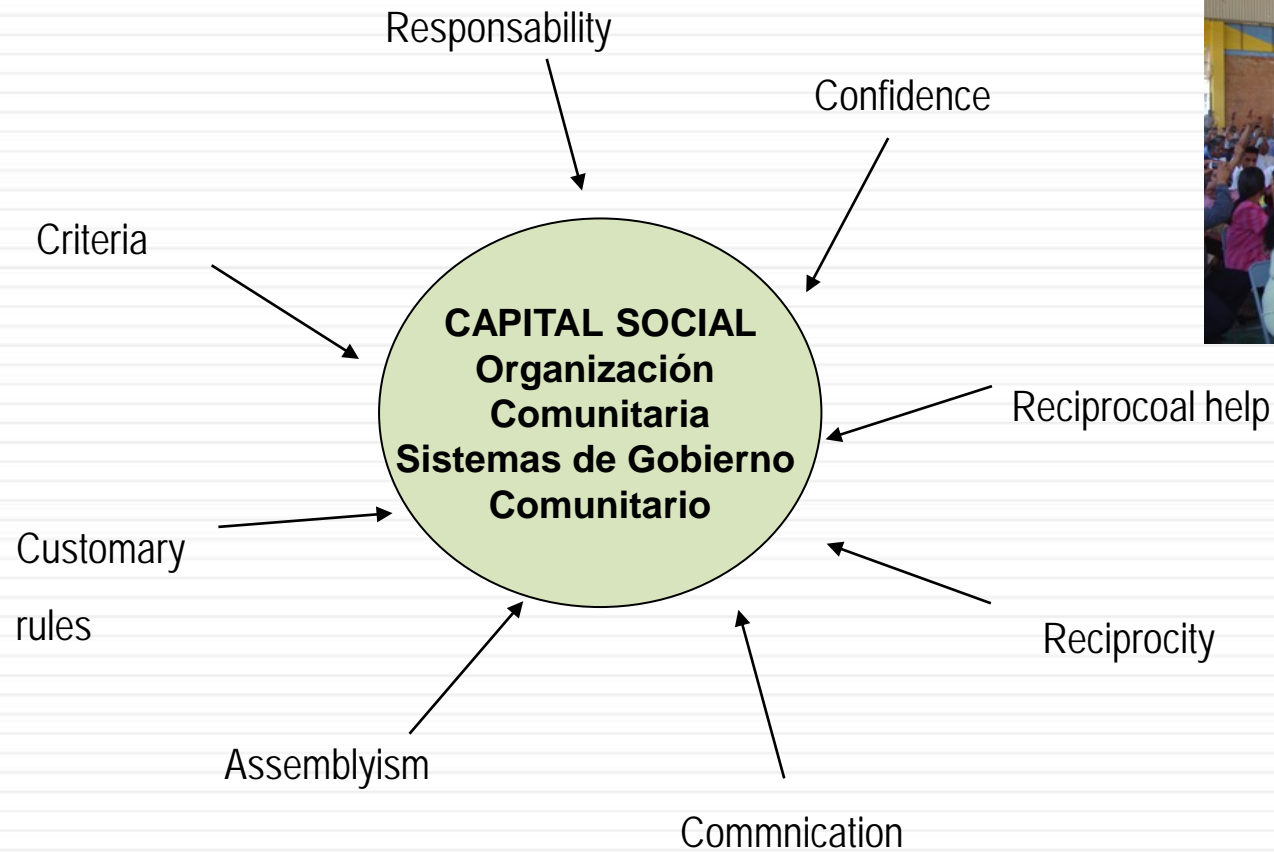


- 16 ethnic groups: Amuzgo, Chatino, Chinantec, Chocho, Chontal, Cuicateco, Huave, Ixcateco, Mazatec, Mixe, Mixtec, Nahuatl, Triqui, Zapotec, Zoque and Popoloca endangered.
- About 2 million people are indigenous: 6 out of every 10 Oaxacans belong to an ethnic group.
- 1,583 agrarian units: 810,773 ejidos and communities.



CONCEPT	
Land area of Oaxaca:	9.3 million hectares
Forest surface in the state:	67.1% (6.2 million hectares)
Forest zoning in the state:	Yield: 66.4% Restoration: 3.2% Conservation: 20.2% Others: 10.2%
Timber production volume of 2013 (round wood):	419.250 m3 (7.1% of national production)
Surface with payment schemes for environmental services:	109,206.17 has
Surface with payment schemes for environmental services in the form of matching funds:	102,858.29 ha
Forest Certification of communities and ejidos (ATP, national or international):	53,310 ha
Spaces for permanent regional social participation:	17

Community Schemes Government in Oaxaca



Activity carried out by those in certain positions that are part of a hierarchical, civil and religious system in some cases; where the whole community participates

**ADMINISTRATION OF JUSTICE,
LEADING THE COMMUNITY
LIFE, CONFLICTS RESOLUTION
(TRADITIONS AND CUSTOMS)**

All adult male members, have to perform some of the lowest positions, the highest are occupied by those who showed greater skills when they served in the past.

Everyday conflicts or crimes of various kinds are often reported to authorities that occupy the most senior positions in this system, whose experience and supported by internal unwritten rules take appropriate decisions.

In some communities, if the problem is very complex, they often request support from respected elders, councils of elders or council characterized, it can be inclusive community assembly

Important Successes



Timber production with sustainability criteria and certification of good forest management, trade integration processes.



Product diversification: packaging spring water, pine resin, community ecotourism, ornamentals, Crafts, Mushrooms, other non-timber forest products.



Community management plans for conservation areas (PSA Voluntary Carbon Market)

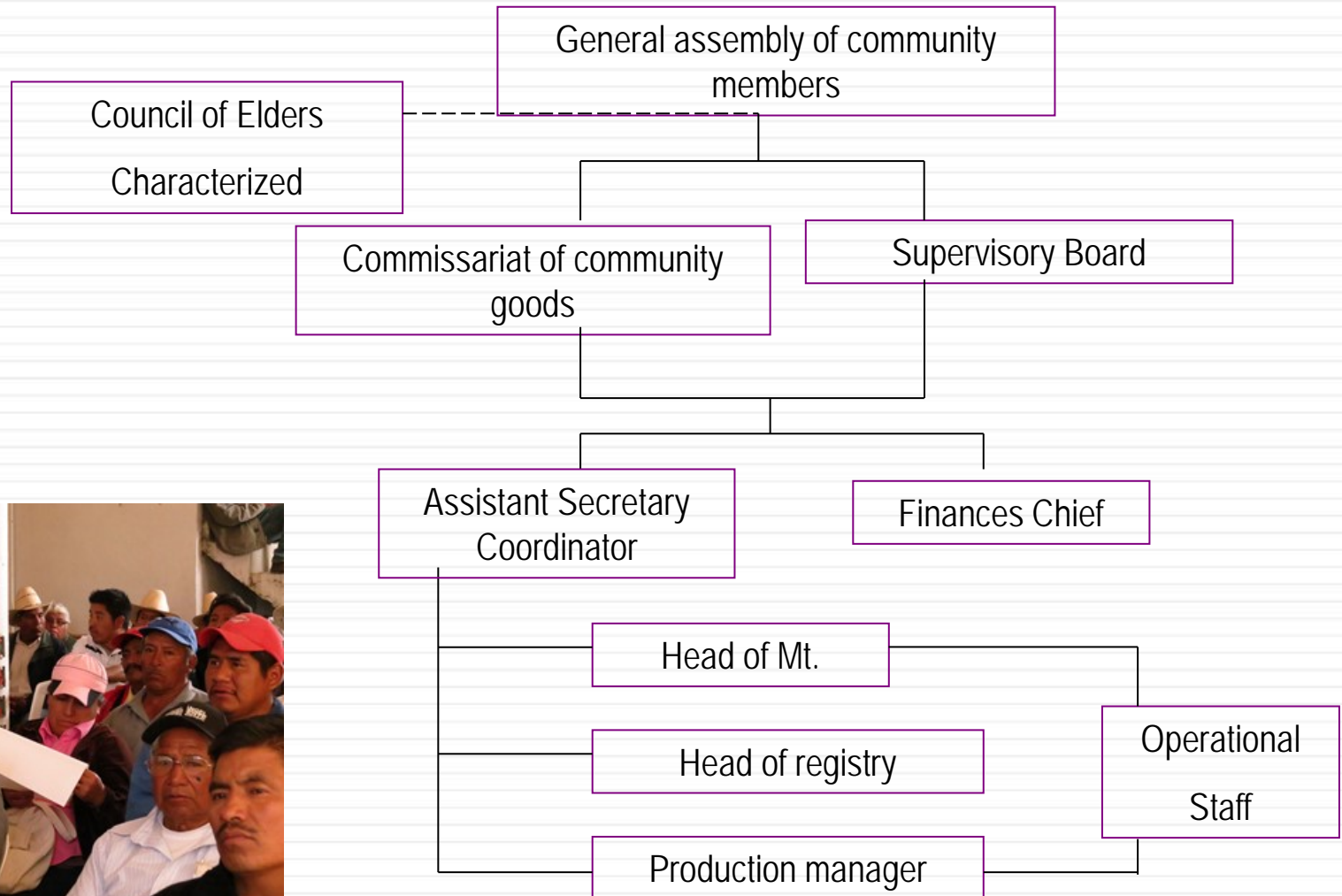


Progress in the process of restoration, reforestation and forest protection.

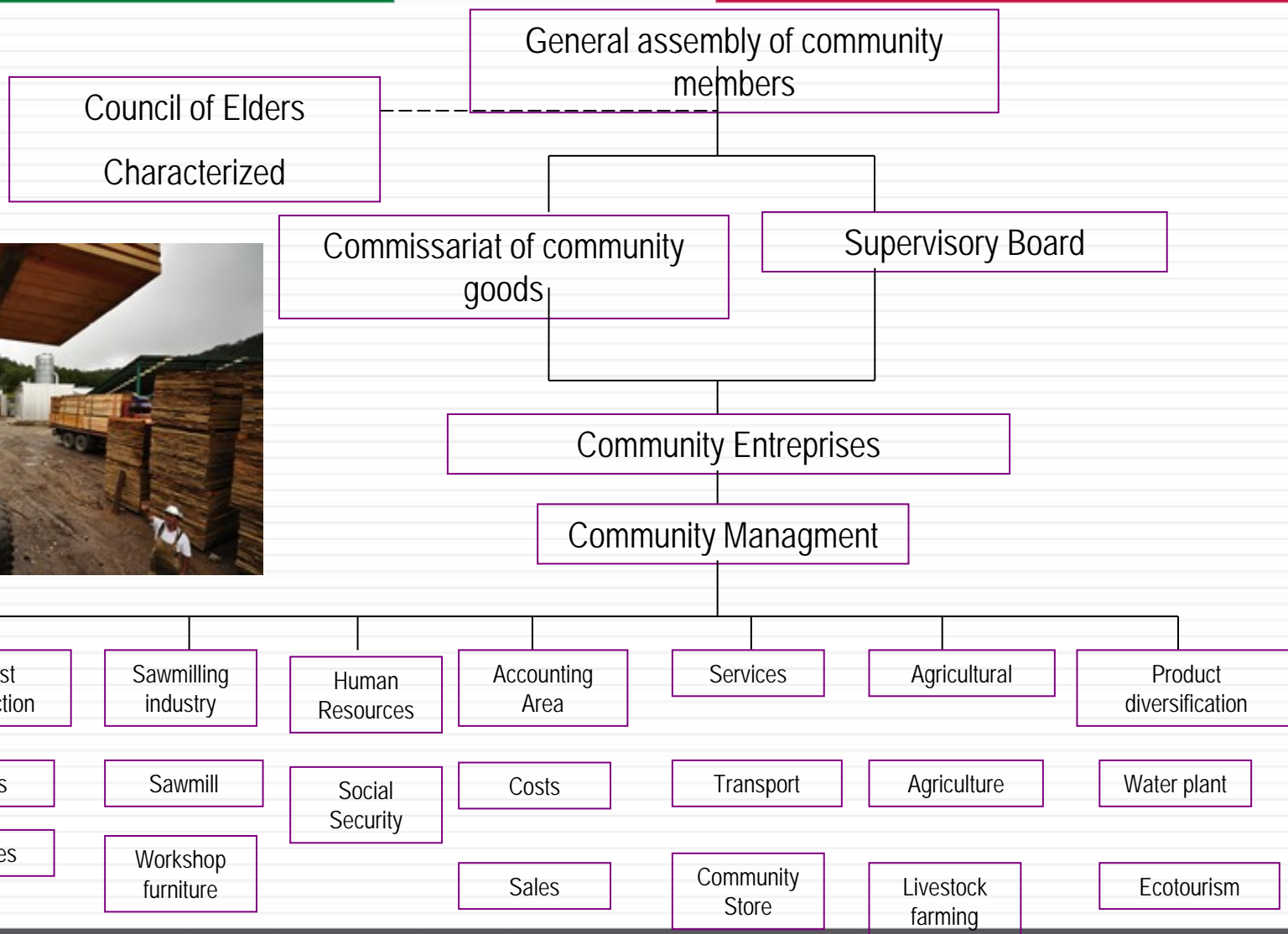
The implementation of the National Strategy for Sustainable Forest Management in order to increase production and productivity (ENAIPROS)



Communities with community enterprises (Traditional Scheme)



Community Management



Support tools for community governance



Community planning tools: Analysis of environmental variables and use needs to determine land use. These tools help planning for the use and access to forest resources in the short, medium and long term.

Definition of rules for the use of common resources to strengthen community life through the Communal Statute: Document prepared and approved by the community, through which effective control over forest resources in common use is established by the conclusion of agreements that enable the development and strengthening of its rules.

Construction of a medium- and long-term view to guide local development in a more orderly and consistent manner (community development plans) and / or medium-term property taxes programs.





Welcome to Oaxaca
Thank you for your attention

SEMARNAT

SECRETARÍA DE
MEDIO AMBIENTE
Y RECURSOS NATURALES

