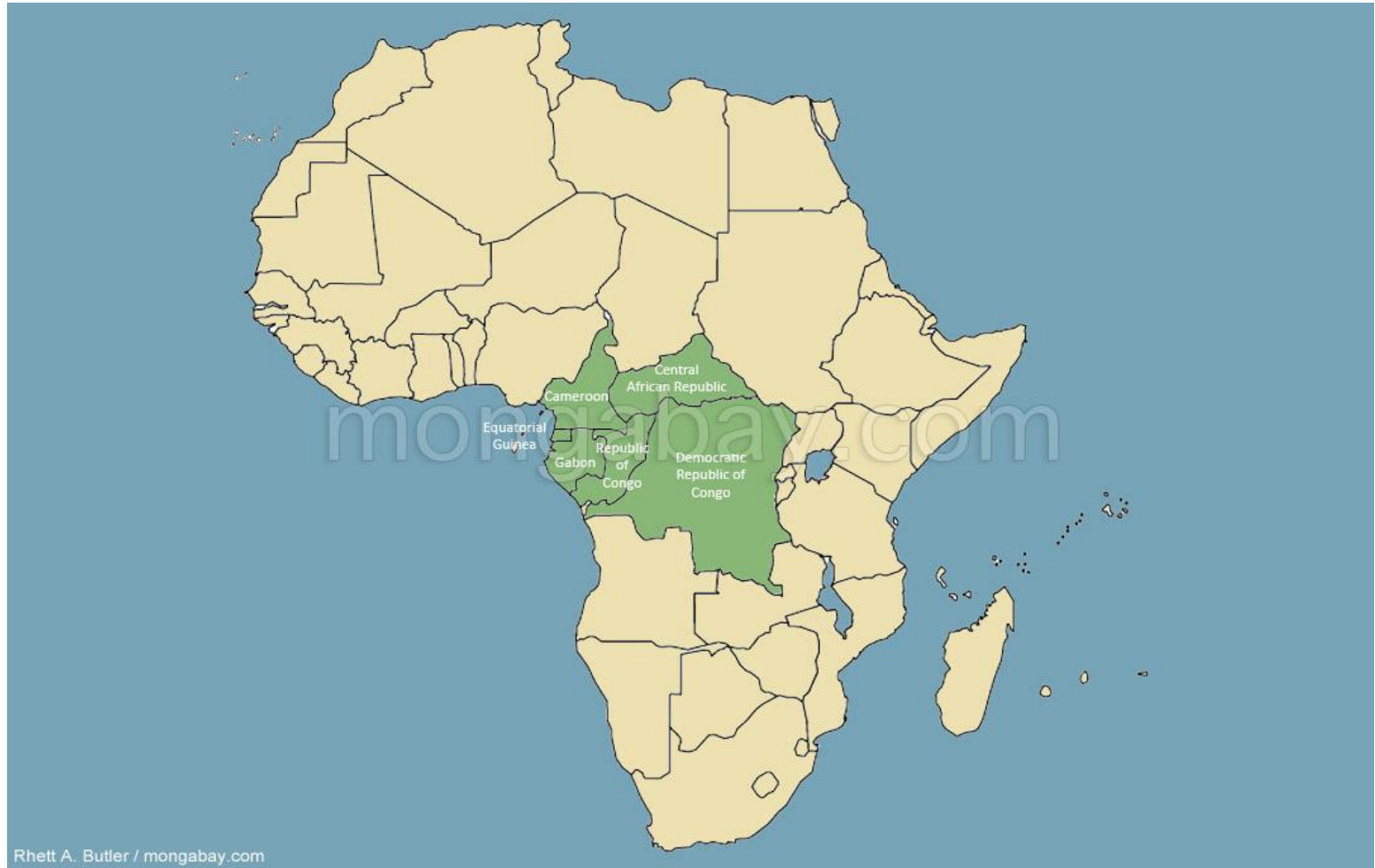




**Centre pour  
l'Environnement et  
le Développement**

Creating opportunities to  
alleviate poverty and promote  
economic development in the  
forests in Central Africa

**Samuel Nguiffo**



The Congo Basin

# 2 main challenges

## ○ Inefficiency of tree harvesting

- 2 cubic meters as waste in the forest for 1 cbm of log harvested
- 65% of the timber entering a sawmill stays as waste

## ○ Inefficiency of forest management

- Management plans standards still weak (very little scientific knowledge backing the information, weak on social issues and rights' recognition)
- Management plans do not take into account no forestry activities in forest areas (mining, large infrastructure, agro-industries)

# Set back of highest standards forest management

INDUSTRIE

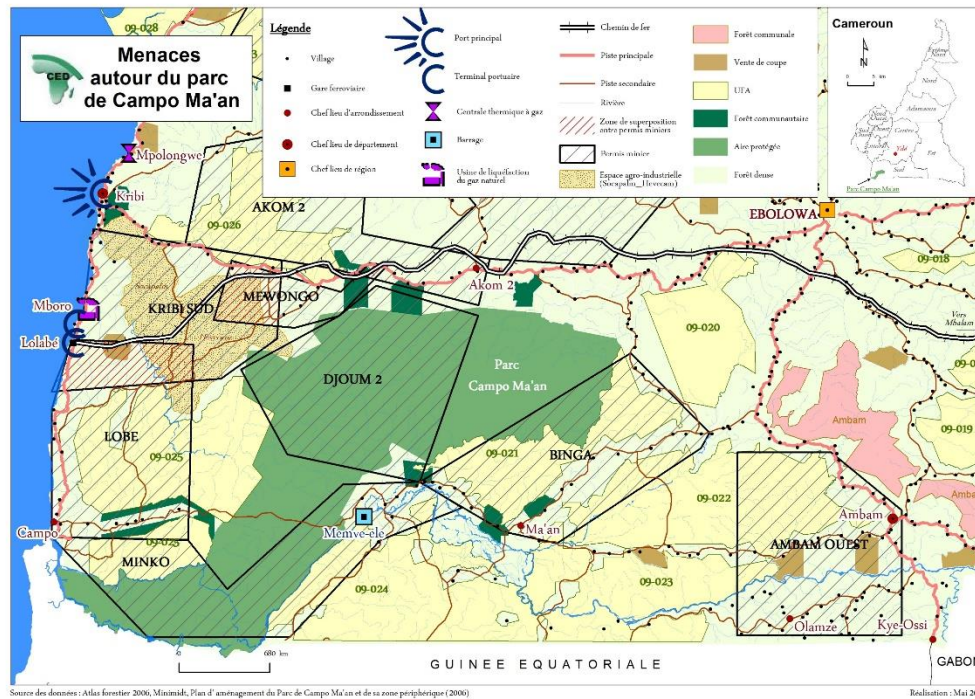
## **Filière bois : Rougier dépose le bilan et accuse « l'engorgement du port de Douala » d'avoir causé sa chute**

06 mars 2018 à 14h32 | Par Jeune Afrique

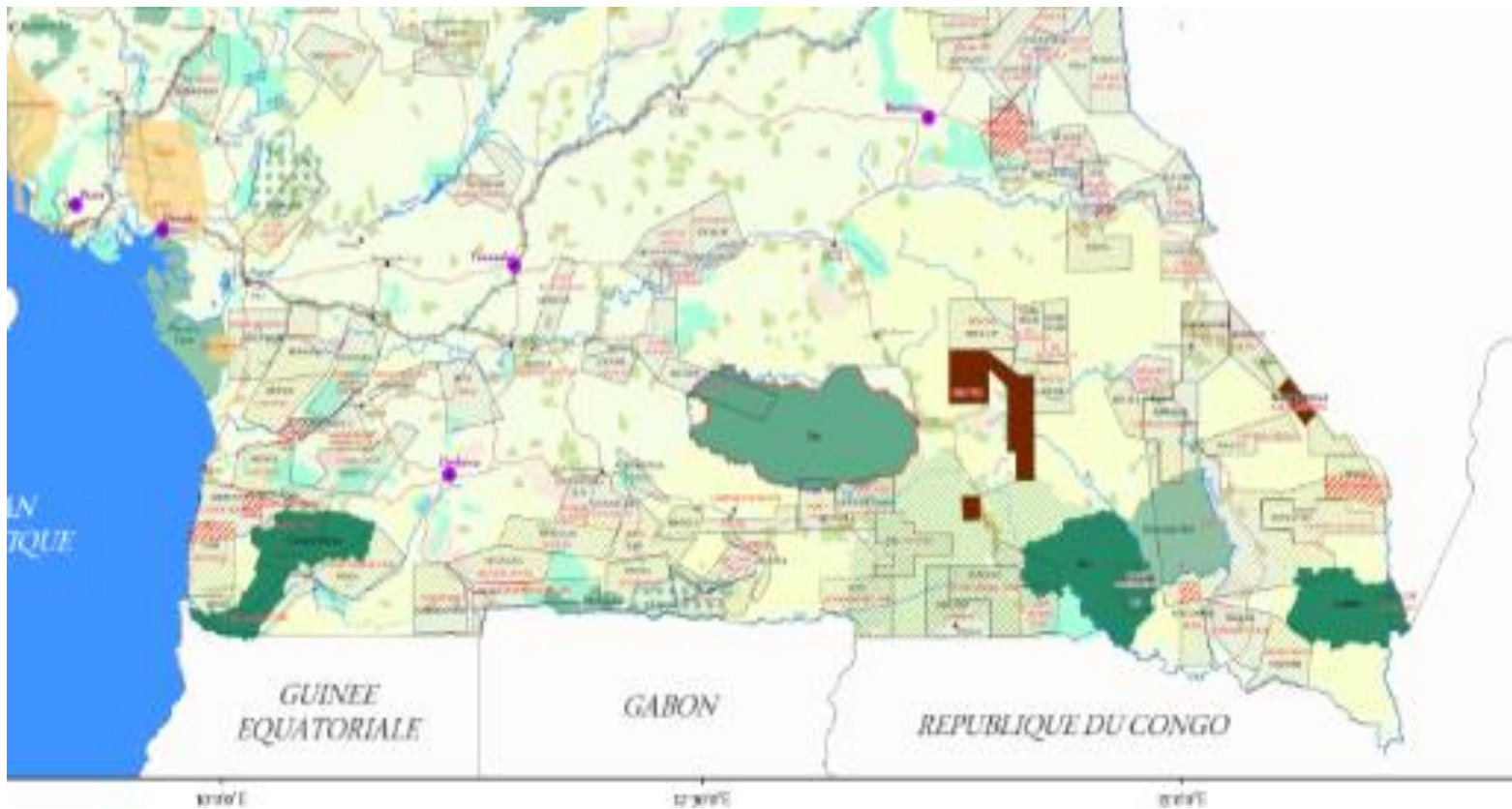
Mis à jour le 06 mars 2018 à 15h01

Le groupe Rougier, présent dans quatre pays en Afrique (Cameroun, Congo, Gabon et Centrafrique), affiche « plus de 2 millions d'hectares de concessions forestières certifiées ».

# Increased threats of forest conversions



Mining permits overlap with forest



## Some opportunities for improving economic efficiency

- **Improvements in timber harvesting**

1 cbm retrieved from « waste » timber has more value than original harvest, and creates more skilled jobs

- **Improvements in timber processing**

Manufacturing end products with 10% of the timber exports creates 20,000 skilled jobs in Cameroon

- **Support to communities forests for restauration and diversified production**

Communities' rights should be better recognized and protected to improve governance and sustainability

- **Manufacturing end products from timber and NTFPs**

